

Integration Note

Manufacturer:	Blustream
Model Number(s):	MFP112
g! Core Module Version:	7.3.271
Driver Developer:	Intrinsic Dev
Document Revision Date:	11/04/16

Overview & Supported Features

This driver allows a g! system to communicate with a Blustream video matrix via Ethernet.

THE FOLLOWING OPTIONS ARE SUPPORTED BY THIS DRIVER:

Matrix Source Selection: The g! Viewer interface, zone slaving, or Event Maps can be used to select sources by zone from the g! system. Any input may be sent to any output.

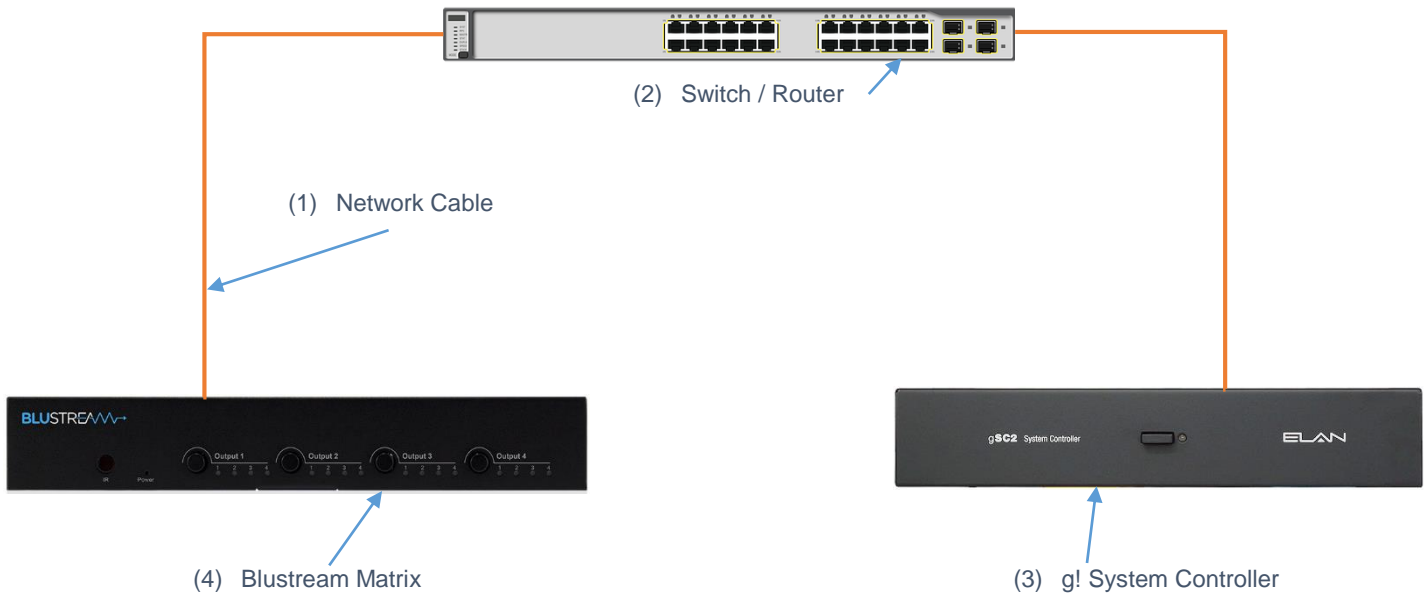
Special Event Map Functions:

- Matrix power on and off
- Beep on or off
- Lock and Unlock front panel controls

Any feature not specifically noted as supported should be assumed to be unsupported.
--

CONNECTION DIAGRAM: ETHERNET CONTROL

Refer to the Bill of Materials and Wiring Diagram that follow.



BILL OF MATERIALS

#	Device	Manufacturer	Part Number	Protocol	Connector Type
1	Blustream Matrix	Blustream	MFP112	Ethernet	RJ-45 Female
2	g! Controller	ELAN	Various (e.g. SC2)	Ethernet	RJ-45 Female
3	Network Switch	Various	Various	Ethernet	RJ-45 Female
4	Network Cable	Various	Various	Ethernet	RJ-45 Male

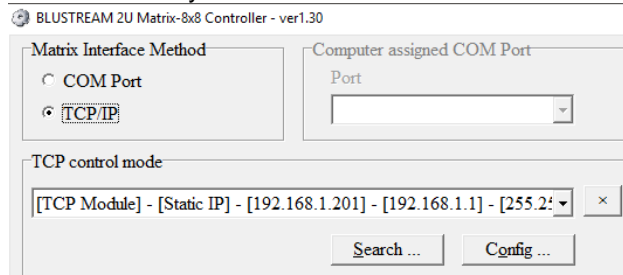
BLUSTREAM SETUP

The Blustream matrix should be installed with cat5/6 cabling back to the g! Controller, or network switch for communications.

ETHERNET CONFIGURATION

It is necessary to configure a static IP address on your Blustream matrix to allow for reliable communication with the g! Controller. This address must be in the same range as the g! Controller.

1. Download the appropriate Matrix Controller software from www.blustream.co.uk
2. Run the software on your PC



3. Use the software to do a network search for the matrix
4. Use the Config button to set a static IP address in the same range as your controller.

NOTES:

You may need to restart the matrix for this change to take effect.

The matrix software will find the Matrix even if it has an IP address not in the same network range as your PC.

DRIVER LICENSE

This driver requires a license key to function. Pricing and license keys can be obtained by emailing info@intrinsicdev.co.uk. The factory system or controller MAC address is needed to generate a license key.

DEMO FUNCTION:

To allow this driver to be tested to ensure suitability for your project, sources 1 to 4 on zone 1 will function without a license key.

INSTALLATION:

The license key is entered on the main properties page of the zone controller.

Zone Controller : Blustream 8x8 Matrix IP	
Name	Blustream 8x8 Matrix IP
System #	32582
Driver Version	3.2.12
Driver Vendor	Intrinsic Dev
Device Type	Blustream 8x8 Matrix IP
Key	123456
IP Address	192 . 168 . 1 . 201
Port	8000

g! CONFIGURATION

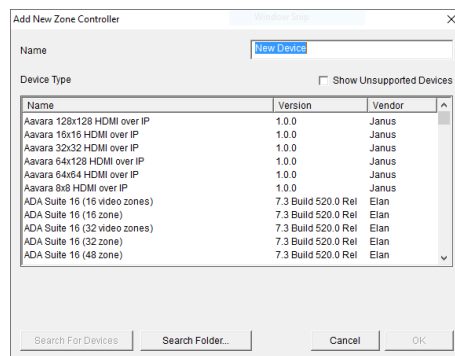
The installation process will involve loading a Zone Controller driver from a downloaded file.

Note: No communication device is needed for this IP driver.

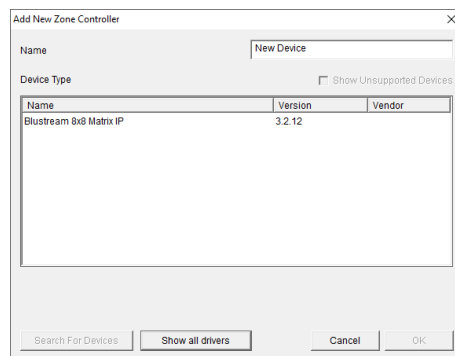
INSTALLATION PROCESS

It is recommended that you follow the below installation process in order to ensure you are running the latest version of the driver.

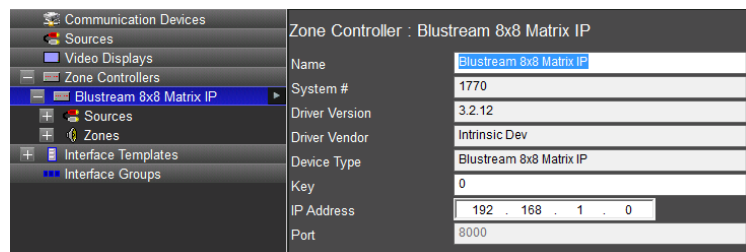
1. Download the latest version of the driver from the ELAN dealer support site.
2. Under the Media tab in configurator, add a new zone controller.



3. On the next window use the Search Folder button to point Configurator to the location you saved the driver.



4. Select the driver and click OK.



5. Enter your license key and matrix IP address then click apply.

g! CONFIGURATION DETAILS

The following table provides settings used in Configurator ... Please refer to the Configurator Reference Guide for more details.

In the table below:

- "<Select from list>" Select the appropriate item from drop down.
- "<User Defined>", etc. Type in the desired name for the item.
- "<Auto Detect>", etc. The system will auto detect this variable.

Devices	Variable Name	Settings (Ethernet)
Zone Controller	Name	<User Defined> (Default <Auto Detect>)
	System #	<Auto Detect>
	Driver Version	<Auto Detect>
	Driver Vendor	Intrinsic Dev
	Device Type	Blustream (Matrix Type)
	Key	<User Defined> (Enter key supplied by Intrinsic Dev)
	IP Address	<User Defined> (Enter static IP address of matrix)
	Port	<Auto Detect>
Sources	System #	<Auto Detect>
	Source Device	<Select from list>
	Display Icon	<Select from list>
	Source Volume	<Auto Detect>
	Display Name	<User Defined> (Default <Auto Detect>)
Zones	Name	<User Defined> (Default <Auto Detect>)
	System #	<Auto Detect>
	Universal Receiver	<Select from list>
	Display 1	<Select from list>
	Display 2	<Select from list>
	Slave Zone 1	<Select from list>
	Slave Zone 2	<Select from list>
	Turn On Source	<Select from list>
	Hide Volume	<Select from list>
	Matrix Only	<Select from list>
	Audio Return Input	<Select from list>

COMMON MISTAKES

1. Driver will not communicate properly if the manufacturers configuration software is connected.
Disconnect the program, close it down and retry.
2. Matrix may need rebooted after changing the IP address.
3. No communication device is needed.

ELAN DEVELOPER PARTNER INFORMATION

This ELAN driver was written and supported by:



info@intrinsicdev.co.uk
www.intrinsicdev.co.uk